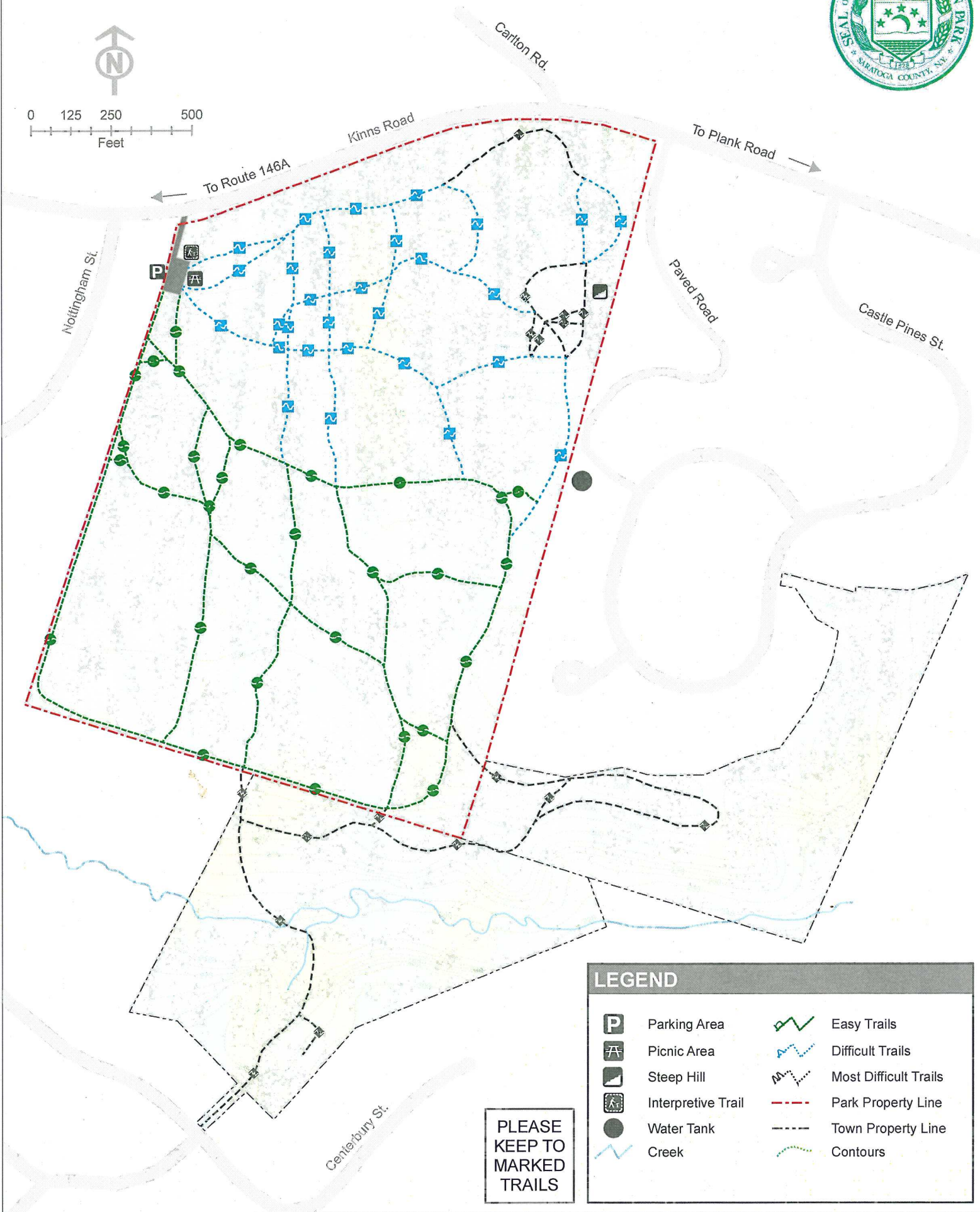
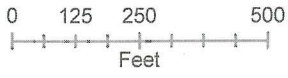


KINNS ROAD PARK MULTI-USE TRAILS

[Clifton Park, Saratoga County, NY]



LEGEND

- | | |
|--------------------|-----------------------|
| Parking Area | Easy Trails |
| Picnic Area | Difficult Trails |
| Steep Hill | Most Difficult Trails |
| Interpretive Trail | Park Property Line |
| Water Tank | Town Property Line |
| Creek | Contours |

**PLEASE
KEEP TO
MARKED
TRAILS**